



NK-16

BOILER WATER SAMPLER

GENERAL FEATURES

It is necessary to take samples from the boiler water from time to time to check whether the boiler water conductivity value is measured correctly. If the boiler water is taken to an open case, some of the sample water taken will become a flash steam, so it will not be a healthy sample and a correct value measurement situation will not be exist. To avoid this situation, a closed and cooled device, the NK-16 sampling container, must be used.

Product Features:

Body: 3" AISI 304 Stainless Steel

Body Nominal Pressure: PN 16

Serpentine Dimensions: 1/2" Threaded

Serpentine: AISI 316L Stainless Steel

Serpentine Nominal Pressure: PN 40

Sample Inlet Valve

Dimension: 1/4" BSP

Material: Stainless Steel

Sealing Part

Max. Pressure: 100 bar

Max. Temperature: 350°C

Cooling Water Inlet Valve

Dimension: 1/2" BSP

Boiler Water: 400 Bar 350°C

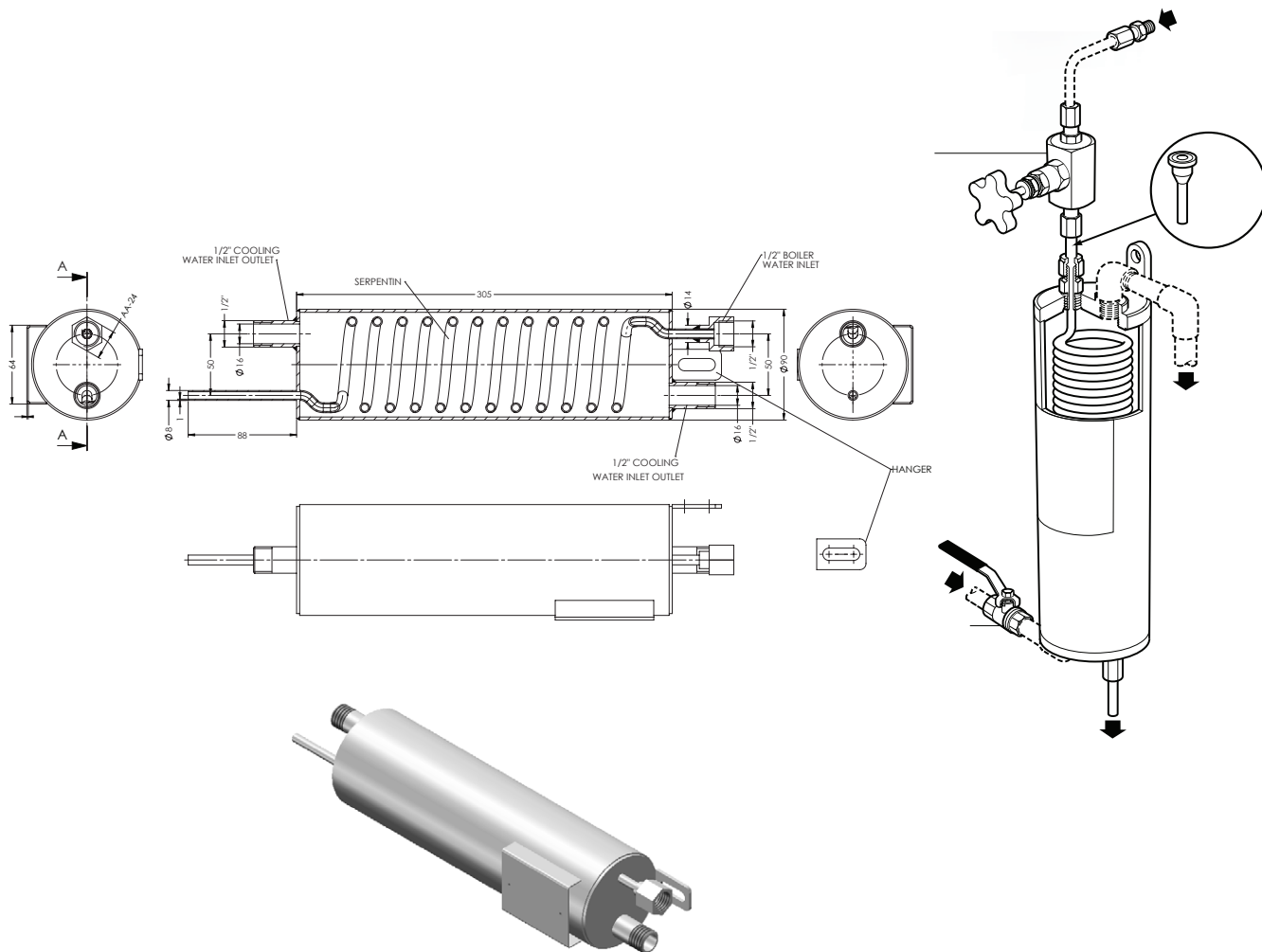
Cooling Water: 10 bar 100°C

Application Areas

-Steam Boiler

-Steam Generator

NK-16 BOILER WATER SAMPLING GASKETINER



2018 - Non contractual document - Reproduction forbidden without prior authorization

BOILER WATER SAMPLING GASKETINER